

VSR

Waterproof louvre for external wall



- Ideal for adverse weather conditions
- Effectively prevents rain from penetrating
- Sturdy design with vertical blades and drainage chamber

TROX[®] TECHNIK

 **Auranor**

TROX Auranor Norge AS

PO Box 100
NO-2712 Brandbu

Telephone: +47 61 31 35 00

Fax: +47 61 31 35 10

e-mail firma@auranor.no

www.auranor.no

VSR



APPLICATION

VSR is designed for use as an air inlet unit in areas exposed to adverse weather conditions. Can be installed in external wall or roof unit.

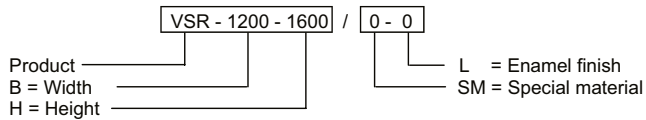
DESIGN

VSR is equipped with vertical blades. The drainage chamber features external drainage, but is available with internal drainage if required. VSR is delivered with the flange unattached.

MATERIALS AND SURFACE COATING

VSR is made of seawater-resistant aluminium. (EN AW-5052/5754))

ORDER CODE, VSR



Example:
VSR-1200-1600 / 0-0
Explanation:
VSR – Width: 1200, Height: 1600

DIMENSIONS AND WEIGHT, VSR

Recommended dimensions: from 600 x 600 to 2000 x 2000.
Module 50 mm. Millimetre adjustment on request.
Weight: approx. 30 kg/m².

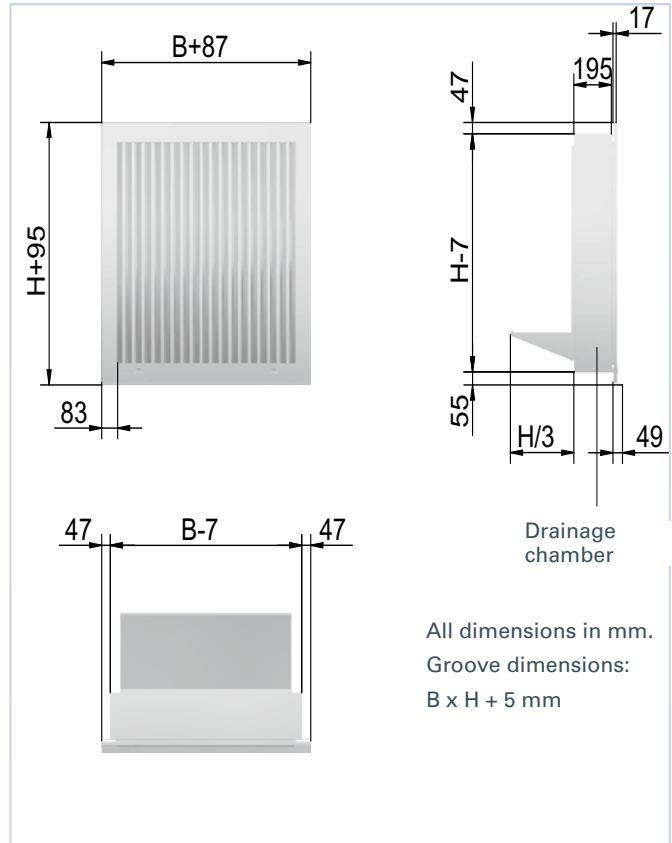
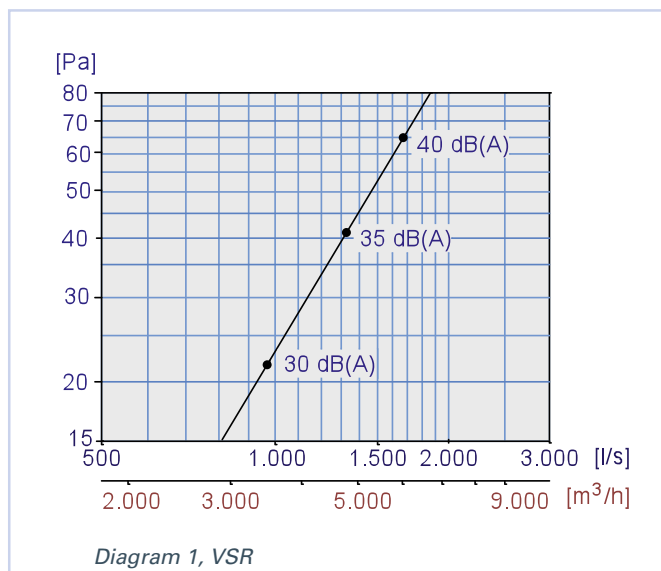


Fig. 1

VSR

ACOUSTIC DATA

The diagram shows capacity per m² gross area.



DIMENSIONING

Table 1 shows the air flow rate at 50 Pa pressure loss. Higher air flow rates are not recommended.

VSR	Width		[Air flow rate m ³ /t v. 1,5m/s in duct velocity]					
Height	600	800	1000	1200	1400	1600	1800	2000
600	1944	2592	3240	3888	4536	5184	5832	6480
800	2592	3456	4320	5184	6048	6912	7776	8640
1000	3240	4320	5400	6480	7560	8640	9720	10800
1200	3888	5184	6480	7776	9072	10368	11664	12960
1400	4536	6048	7560	9072	10584	12096	13608	15120
1600	5184	6912	8640	10368	12096	13824	15552	17280
1800	5832	7776	9720	11664	13608	15552	17496	19440
2000	6480	8640	10800	12960	15120	17280	19440	21600

Table 1

VSR

INSTALLATION

VSR is delivered with welded lugs as shown in fig. 2. The flange, as shown in fig. 3, is attached to the unit by means of screws. It is important not to use the flange as a mounting frame. Installation of a water channel above the louvre is recommended in order to prevent rainwater on the façade from penetrating (see fig. 4).

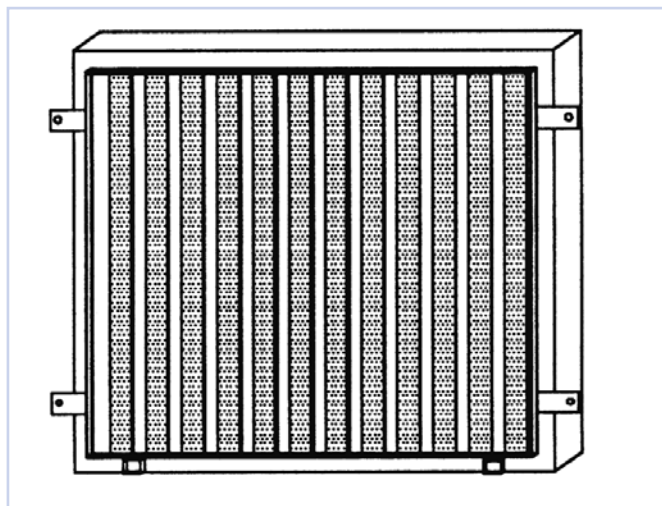


Fig. 2: Installation

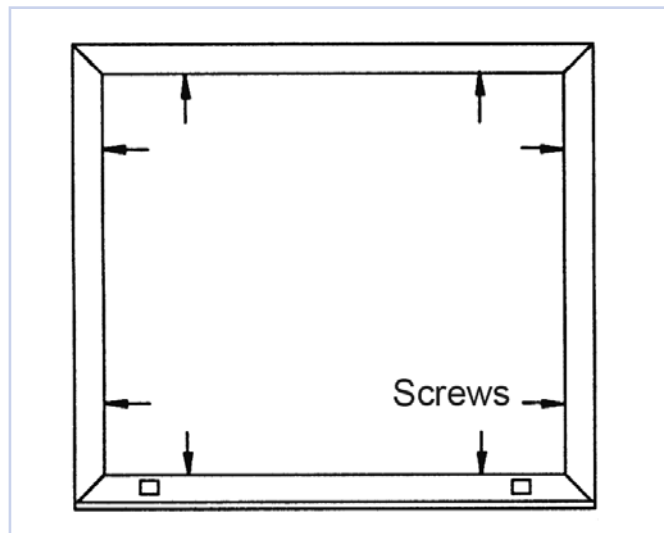


Fig. 3: Installation

MAINTENANCE

It is important to keep the louvre clean. Vacuuming from both the inside and the outside is recommended.

VSR is developed and manufactured by:

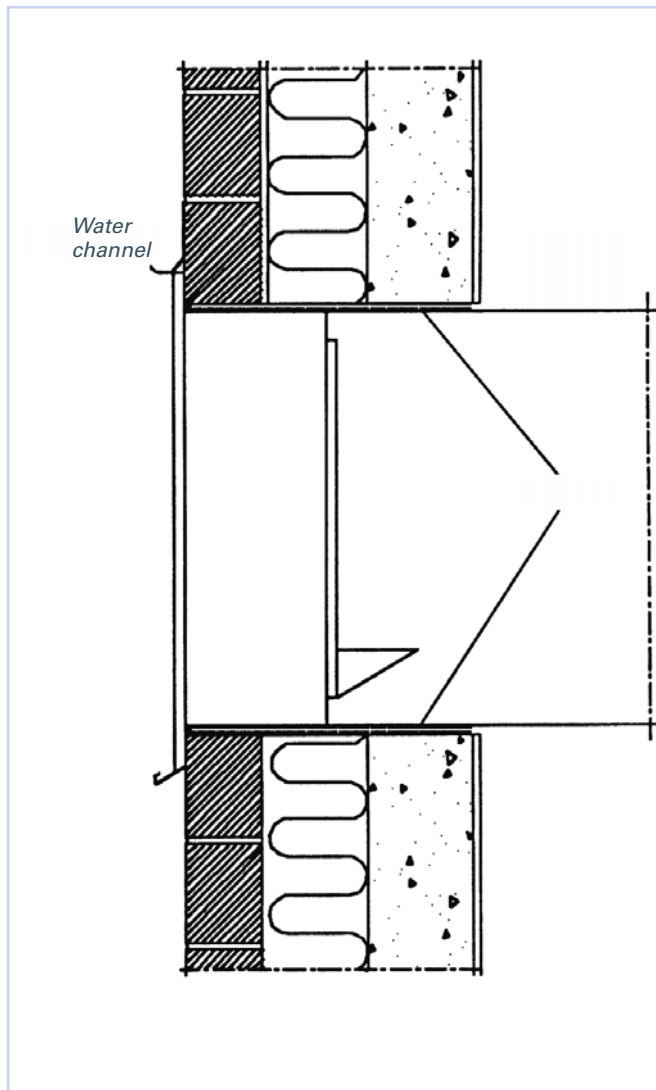


Fig. 4: Installation

ENVIRONMENT

Enquiries regarding product declaration can be directed to our sales team, or information can be found at our website: www.auranor.no

The company reserves the right to make amendments without prior notice.